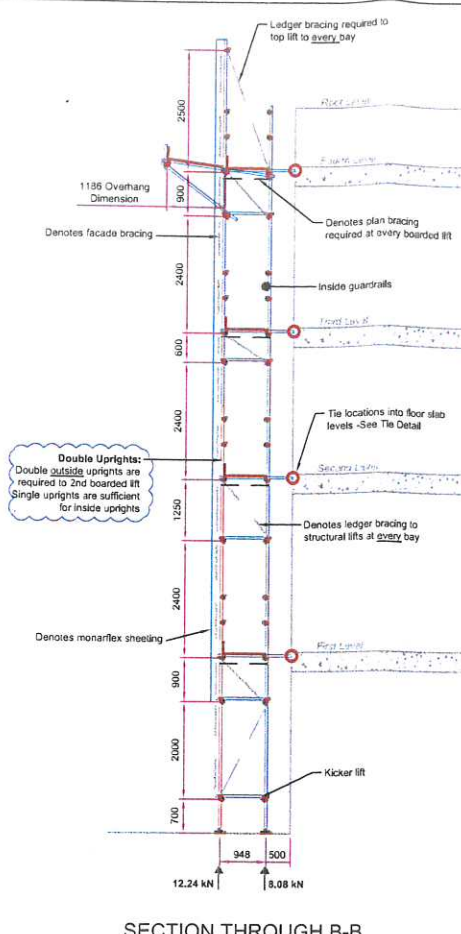
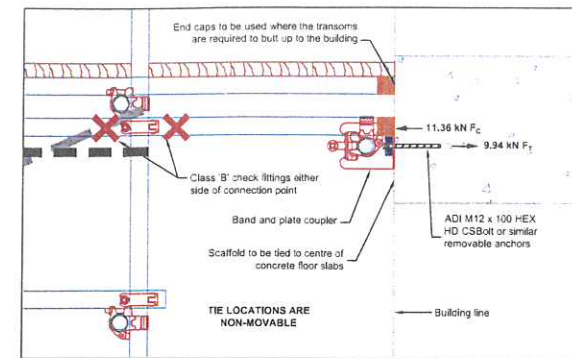


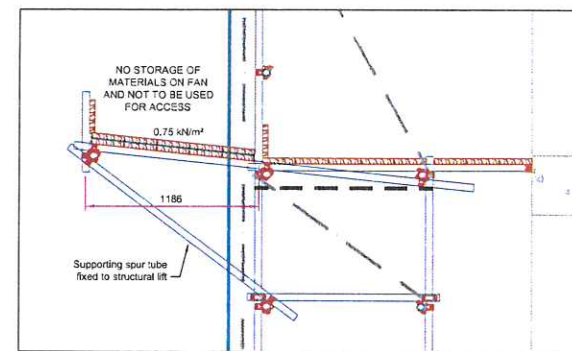
ELEVATION VIEW A-A



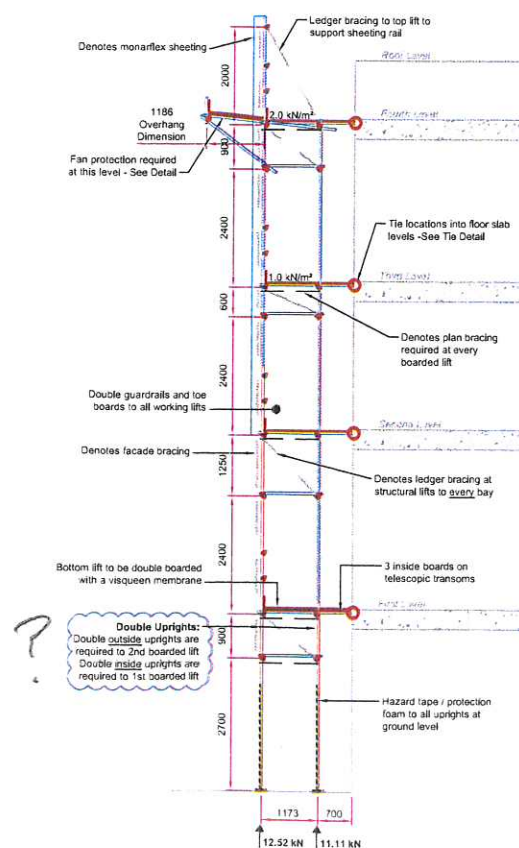
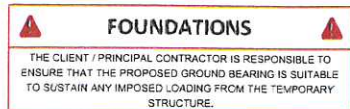
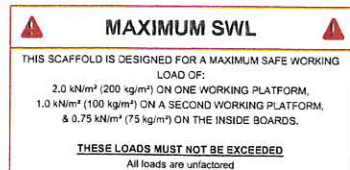
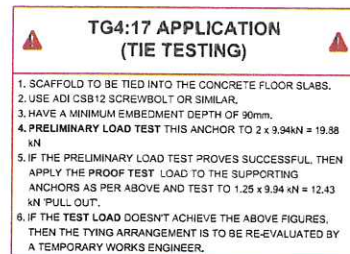
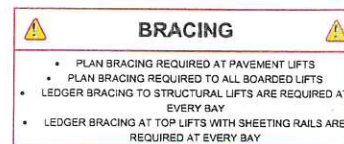
SECTION THROUGH B-B



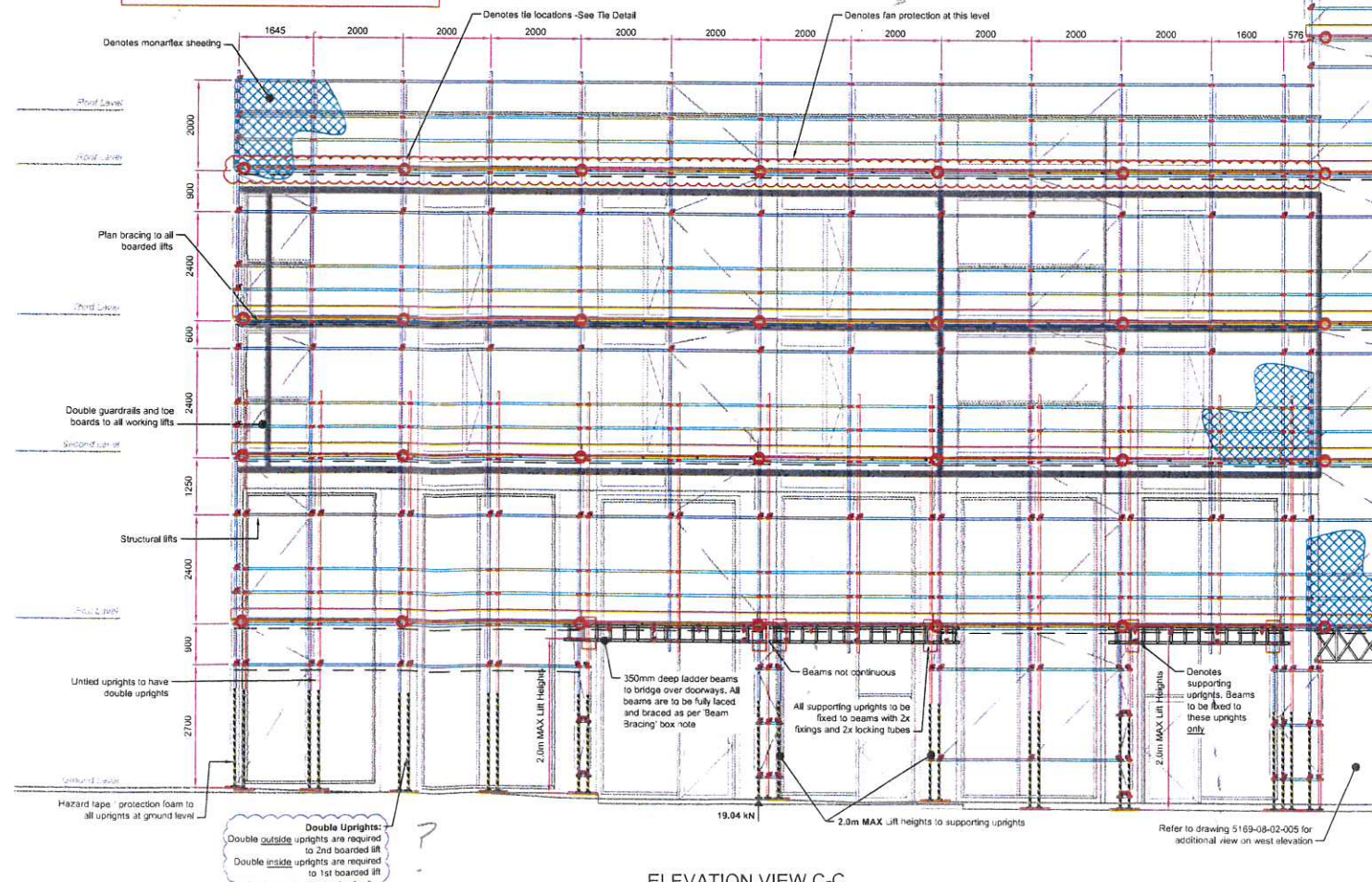
TYPICAL TIE DETAIL
(SCALE 1:10)



TYPICAL FAN PROTECTION DETAIL
(SCALE 1:25)



SECTION THROUGH D-D



ELEVATION VIEW C-C

NOTES:
This drawing is confidential and is the exclusive property of RDG Engineering Ltd.
No unauthorised use, copy or disclosure is to be made and is to be returned upon request.
Hire Only - All plant supplied on the basis is subject to our conditions of hire or sale as applicable.

The customer should check that we have correctly interpreted his / her requirements and that all loadings, dimensions, details, erection and striking sequences, etc. are correct and practicable.

The customer is to ensure that the ground, structure and / or base provided for our scaffold is adequate to support the loads applied without settlement, including the provision for any necessary spreaders.

Drawing Notes:
READ ALL NOTES ON DRAWING.

ALL bracing / restraints are to be installed as per drawing.

All design and erection of scaffolds are to conform with the following British Standards and Codes Of Practice where applicable:

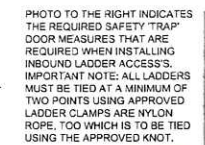
- BS EN 12811-1:2003 Temporary works equipment - Part 1: Scaffolds - Performance requirements and general design
- BS EN 12811-2:2003 Temporary works equipment - Part 2: Formwork - Performance requirements and general design
- BS EN 1991-1-1:2004 Eurocode 1: Actions on Structure - Part 1-1: General Actions - Dead loads, Self-weight, Imposed loads for Buildings
- BS EN 1991-1-4:2005 Eurocode 1: Actions on Structure - Part 1-4: General Actions - Wind Actions
- TG20:13 Design Guide - Technical Guidance on the use of BS EN 12811-1
- TG04:11 Anchorage Systems
- SG04:15 Preventing Falls in Scaffolding
- SG25:10 Access and Egress from Scaffolds
- CG06:09 Scaffold Design

LOAD BEARING COUPLERS MUST BE USED ON ALL TIE RELATED COMPONENTS UNLESS OTHERWISE SHOWN / STATED

Unless stated otherwise genuine products / components are to be used to ensure that structural performance can be guaranteed.

No alteration in or which may effect the loading is to be made without reference to RDG Engineering Design Office.

Dimensions:
All dimensions are in mm and centre to centre unless otherwise stated.
Written dimensions will take precedence over scaled dimensions.



REV	DATE	DESCRIPTION OF ISSUE	OWN	CHECKED	APPROVED
00	10/04/18	Issued For Construction	SM	DPH	SM
P1	15/02/18	Issued For Approval - Overhang Dimension Added to Fan Protection	SM	DPH	SM
SK1	13/02/18	Issued For Information	SM		



RDG
ENGINEERING LTD

Unit 5, Old Marsh Farm Barns, Old Marsh Farm Road,
Sealand, Flintshire, CH5 2LY, tel: 01244 281 106
e-mail: design@rdgengineering.co.uk

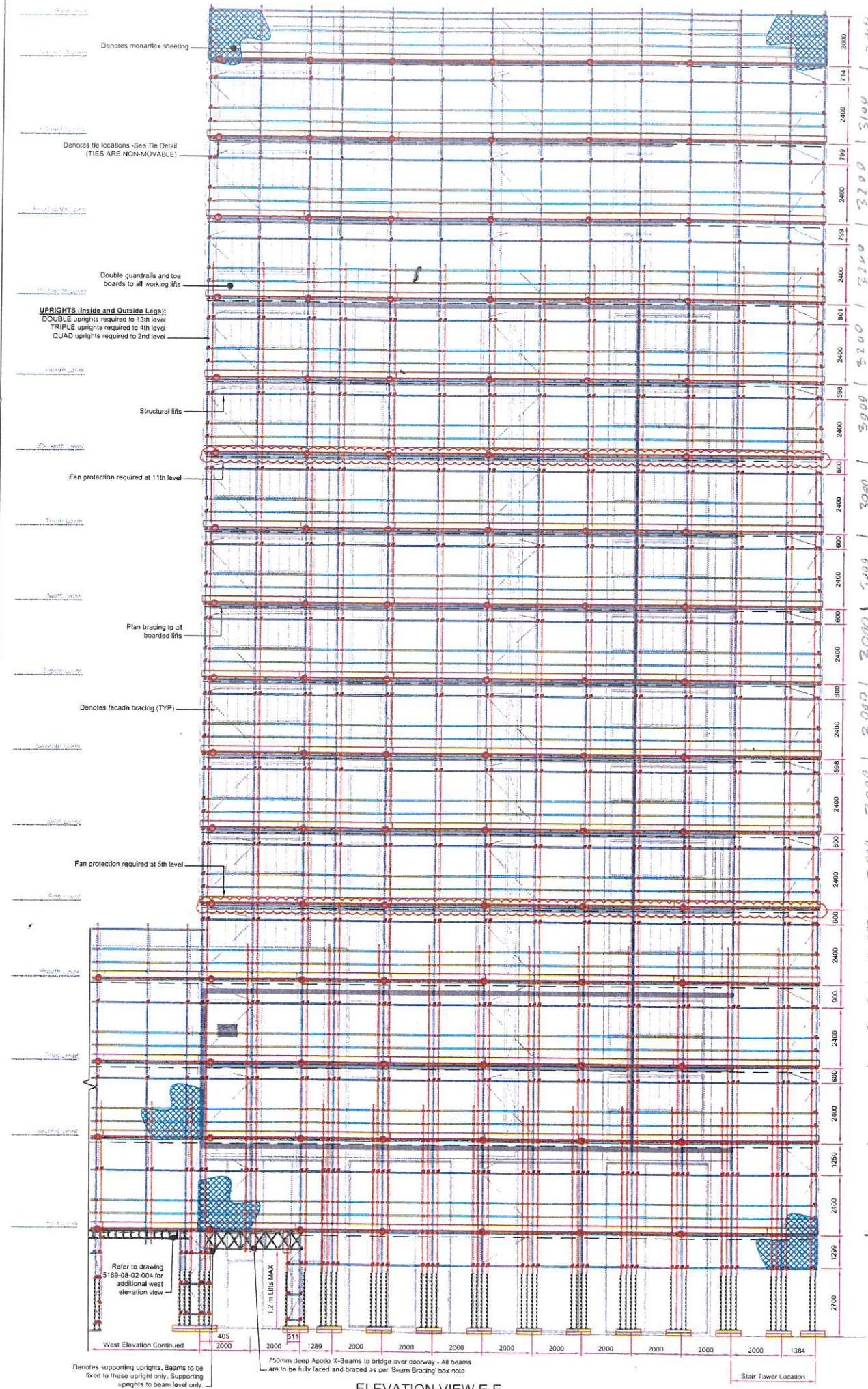
PROJECT
Battersea Exchange,
167 Battersea Park Road,
London.

DRAWING TITLE
Tied Independent Perimeter
Scaffold
- North and West Elevations.

CLIENT'S DRAWING REFERENCE
U17-08-14

SCALE
1:75 at A1 UNO 5169-08-02-004 00

THIS DRAWING AND THE INFORMATION CONTAINED IS CONFIDENTIAL AND IS THE PROPERTY OF RDG ENGINEERING LTD. IT IS ISSUED ON THE CONDITION THAT IT SHALL NOT BE REPRODUCED (COPIED) OR PASSED TO THIRD PARTIES WITHOUT THE WRITTEN APPROVAL OF RDG ENGINEERING LTD.



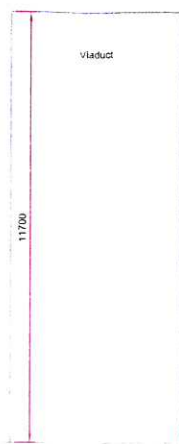
ELEVATION VIEW E-E

SOLE PADS

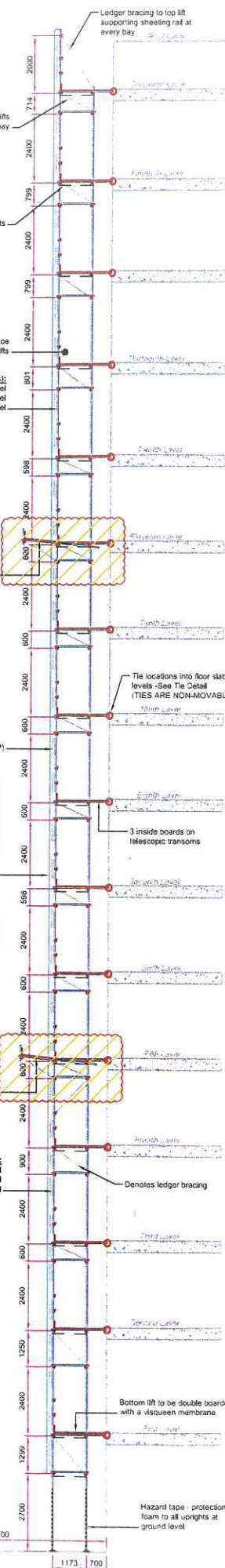
DUE TO UNPUBLISHED GROUND BEARING PRESSURE, ALL SOLE PADS ARE TO BE A MINIMUM OF 100mm TIMBER SLEEPERS

BRACING

- PLAN BRACING REQUIRED AT PAVEMENT LIFTS
- PLAN BRACING REQUIRED TO ALL BOARDED LIFTS
- LEDGER BRACING TO STRUCTURAL LIFTS ARE REQUIRED AT EVERY BAY
- LEDGER BRACING AT TOP LIFTS WITH SHEETING RAILS ARE REQUIRED AT EVERY BAY



SECTION THROUGH F-F



ELEVATION VIEW G-G

NOTES:
This drawing is confidential and is the exclusive property of RDG Engineering Ltd. No unauthorised use, copy or disclosure is to be made and is to be returned upon request. Hire Only - All plant supplied on the basis is subject to our conditions of hire or sale as applicable.
The customer should check that we have correctly interpreted his / her requirements and that all loadings, dimensions, details, erection and striking sequences, etc. are correct and practicable.
The customer is to ensure that the ground, structure and / or base provided for our scaffold is adequate to support the loads applied without settlement, including the provision for any necessary spreaders.

Drawing Notes:
READ ALL NOTES ON DRAWING.

ALL bracing / restraints are to be installed as per drawing.

All design and erection of scaffolds are to conform with the following British Standards and Codes Of Practices where applicable:

- BS EN 39-2001 Loose steel tubes for tube and coupler scaffolds - Technical delivery conditions
- BS 2482:2009 Specification for timber scaffold boards
- BS EN 12811-1:2003 Temporary works equipment - Part 1: Scaffolds - Performance requirements and general design
- BS EN 1991-1-1:2002 Eurocode 1: Actions on Structure - Part 1-1: General Actions - Densities, Self-weight, Imposed Loads for Buildings
- BS EN 1991-1-4:2005 Eurocode 1: Actions on Structure - Part 1-4: General Actions - Wind Actions
- TG20:13 Design Guide - Technical Guidance on the use of BS EN 12811-1
- TG04:11 Anchorage Systems
- SG04:15 Preventing Falls in Scaffolding
- SG25:10 Access and Egress from Scaffolds
- CG06:09 Scaffold Design

LOAD BEARING COUPLERS MUST BE USED ON ALL TIE RELATED COMPONENTS UNLESS OTHERWISE SHOWN / STATED

Unless stated otherwise genuine products / components are to be used to ensure that structural performance can be guaranteed.

No alteration in or which may effect the loading is to be made without reference to RDG Engineering Design Office.

Dimensions:
All dimensions are in mm and centre to centre unless otherwise stated.
Written dimensions will take precedence over scaled dimensions.

MAXIMUM SWL

THIS SCAFFOLD IS DESIGNED FOR A MAXIMUM SAFE WORKING LOAD OF:
2.0 kN/m² (200 kg/m²) ON ONE WORKING PLATFORM.
1.0 kN/m² (100 kg/m²) ON A SECOND WORKING PLATFORM.
0.75 kN/m² (75 kg/m²) ON THE INSIDE BOARDS.
THESE LOADS MUST NOT BE EXCEEDED
All loads are unfactored

SHEETING

SCAFFOLD IS DESIGNED TO BE FULLY SHEETED IN MONARFLEX OR SIMILAR

FOUNDATIONS

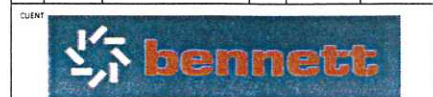
THE CLIENT / PRINCIPAL CONTRACTOR IS RESPONSIBLE TO ENSURE THAT THE PROPOSED GROUND BEARING IS SUITABLE TO SUSTAIN ANY IMPOSED LOADING FROM THE TEMPORARY STRUCTURE.

BEAM BRACING

ALL BEAMS ARE TO BE BRACED / RESTRAINED IN ACCORDANCE WITH THE FOLLOWING RECOMMENDATIONS:

- TOP CHORD RESTRAINT / LACE TUBES 1000mm MAX CENTRES.
- BOTTOM CHORD RESTRAINT / LACE TUBES 2000mm MAX CENTRES.
- PLAN BRACING ON / ADJACENT TOP CHORD (COMPRESSION CHORD) MAXIMUM OF 1000mm NODE CENTRES.
- KNEE BRACING AT NODES AT 2000mm CENTRES MAX.

REV	DATE	DESCRIPTION OF ISSUE	DRN	CHECKED	APPROVED
00	10/04/18	Issued For Construction	SM	DPH	SM
P1	15/02/18	Issued For Approval - Vladuct Shown on Section and Fan Protections Highlighted	SM	DPH	SM
SK1	13/02/18	Issued For Information	SM		



RDG
ENGINEERING LTD
Unit 5, Old Marsh Farm Barns, Old Marsh Farm Road,
Sealand, Flintshire, CH5 2LY, tel: 01244 281 106
e-mail: design@rdgengineering.co.uk

PROJECT
Battersea Exchange,
167 Battersea Park Road,
London.

DRAWING TITLE
Tied Independent Perimeter
Scaffold
- West Elevation.

CLIENT'S DRAWING REFERENCE
U17-08-14
SCALE
1:100 at A1
RDG ENGINEERING TAG No
5169-08-02-005
REV
00

*THIS DRAWING AND THE INFORMATION CONTAINED IS CONFIDENTIAL AND IS THE PROPERTY OF RDG ENGINEERING LTD. IT IS ISSUED ON THE CONDITION THAT IT SHALL NOT BE REPRODUCED (COPIED OR PASSED TO THIRD PARTIES) WITHOUT THE WRITTEN APPROVAL OF RDG ENGINEERING LTD.

